



Web VTS Installation Guide

Copyright © 2006-2010 SiiTech Inc. All rights reserved.

Table of Contents

Overview of Web VTS	1
System Requirements	2
Installation Sequence	3
Installing Web VTS	6

Overview of Web VTS

Web VTS is a web-based marine traffic monitoring system for ports and other organizations interested in monitoring vessel movements in real-time mode.

Web VTS increases the safety, security and efficiency of operations within a port.

Web VTS provides a complete AIS interface that includes the ability to:

- View and track all AIS equipped vessels
- Display specific vessel information
- Send and receive safety messages
- Automatically send virtual Aids to Navigation (AtoN) messages (only with AIS Base stations)

Web VTS assists port authorities and other traffic monitoring operators to:

- Identify and track AIS equipped vessels
- Provide additional information to assist collision avoidance and investigation
- Archive important AIS data into a database
- Make any operational decision or action
- Provide full range of unique marine traffic reports

Web VTS's interface and display of AIS related information offers port operators a substantial leap forward in their ability to communicate and interact with sea-based vessels. Since Web VTS is fully configurable, operators can adjust the size of the chart panel, customize color patterns for AIS targets, set alarms, and create reports, filters, and zones specific to each user.

Web VTS receives AIS data from SiiTech AIS Server and provides a graphic display of AIS targets onto electronic charts and maps.

Web VTS supports Google maps, Microsoft Virtual Earth maps, ENC and BSB charts.

System Requirements

- Supported Operating Systems: Windows 2000 Service Pack 4; Windows Server 2003 Service Pack 1; Windows XP Service Pack 2; Windows Vista; Windows Server 2008; Windows Server 2008 R2.
- Computer with Intel or compatible Pentium III 600 MHz or faster processor (1 GHz or faster is recommended).
- Minimum of 192 MB of RAM (512 MB or more is recommended).
- 500 MB of available hard disk space.
- Internet Information Services (IIS).
- .NET Framework Version 2.0.
- Microsoft SQL Server 2005, SQL Server 2008, SQL Server 2005 Express Edition, or SQL Server 2008 Express Edition.

Installation Sequence

The following software installation sequence is a general guideline. Unless otherwise instructed by SiiTech technical support, please follow these steps to ensure successful installation of your Web VTS solution.

Attention! You need to have your Windows CD available.

1. Install Internet Information Services (IIS).

To install Internet Information Services on Windows 2000:

- On the **Start** menu, choose **Run**.
- In the **Open** dialog box, type **appwiz.cpl**, and then click **OK** to open the **Add/Remove Programs** dialog box; you can also access this dialog box from the Control Panel.
- In the **Add/Remove Programs** dialog box, choose **Add/Remove Windows Components** on the left side of the dialog box.
- In the **Windows Component Wizard**, check **Internet Information Services (IIS)**.
- Choose **Next** to begin installing IIS.
- Click **Finish** when installation is complete.
- Close the **Add/Remove Programs** dialog box.

To install Internet Information Services on Windows XP:

- On the **Start** menu, choose **Run**.
- In the **Open** dialog box, type **appwiz.cpl**, and then click **OK** to open the **Add/Remove Programs** dialog box; you can also access this dialog box from the Control Panel.
- In the **Add/Remove Programs** dialog box, choose **Add/Remove Windows Components** on the left side of the dialog box.
- In the **Windows Component Wizard**, check **Internet Information Services (IIS)**.
- Choose **Next** to begin installing IIS.
- Click **Finish** when installation is complete.
- Close the **Add/Remove Programs** dialog box.

To install Internet Information Services on Windows Server 2003:

- On the **Start** menu, choose **Run**.
- In the **Open** box type **appwiz.cpl**, and then click **OK** The **Add or Remove Programs** dialog box appears; you can also access this dialog box from the Control Panel.
- Click **Add/Remove Windows Components**. The Windows Component Wizard appears.
- In the **Components** select the **Application Server** checkbox, and then click **Details**.
Note: you will get warnings if you have not converted your drive to NTFS. For details please refer to **Securing Your Machine for Installation** section above.

Web VTS Installation Guide

- In the **Application Server** dialog box, select the **ASP .NET** checkbox. Note: **Do not** click **OK**.
- Select the **Internet Information Services (IIS)** checkbox, and then click **Details**.
- In the **Application Server** dialog box, click **OK**.
- In the **Windows Component Wizard** click **Next**. This will install required components.
- When installation is complete. Click **Finish**.
- Close the **Add/Remove Programs** dialog box.

To install Internet Information Services on Windows Vista:

- Click **Start** and then click **Control Panel**.
- In Control Panel, click **Programs** and then click **Turn on or off Windows features**.
- In the Windows Features dialog box, click **Internet Information Services**
- When the Windows Features dialog appears, make sure that the following options are selected:
 - **Internet Information Services**
 - **Web Management Tools**
 - **IIS 6 Management Compatibility**
 - **IIS 6 Management Compatibility**
 - **IIS 6 Management Console**
 - **IIS 6 Scripting Tools**
 - **IIS 6 WMI Compatibility**
 - **IIS Metabase and IIS 6 configuration compatibility**
 - **IIS Management Console**
 - **World Wide Web Services**
 - All default options
- Click **OK** to enable the selected options.

To install Internet Information Services on Windows Server 2008:

- Click **Start -> All Programs -> Administrative Tools -> Server Manager**.
- In the **Server Manager** window, scroll down to **Roles Summary**, and then click on **Add Roles**. The **Add Roles Wizard** will start with the **Before You Begin** page. Click **Next**.
- On the **Select Server Roles** page, select **Web Server (IIS)**. Click **Next**.
- On the **Web Server (IIS)** page, click **Next**.
- On the **Select Role Services** page, make sure that the following options are selected:
 - **Web Server**
 - **Application Development** and all sub-options
 - **Management Tools**
 - **IIS 6 Management Compatibility** and all sub-options
- Click **Next**.
- Click **Install**.
- Click **Close**.

2. Download and install [Microsoft .NET Framework 2.0](#).

3. Fix IIS mappings for ASP.NET.

To fix IIS mappings for ASP.NET, run the Aspnet_regiis.exe utility:

- Click **Start**, and then click **Run**.
- In the **Open** text box, type **cmd**, and then press **ENTER**.
- At the command prompt, type the following, and then press **ENTER**:

```
"%windir%\Microsoft.NET\Framework\version\aspnet_regiis.exe" -i
```

In this path, *version* represents the version number of the .NET Framework that you installed on your server. You must replace this placeholder with the actual version number when you type the command. If you have several versions of the .NET Framework installed on your server, you have to use the number started with **v2**. See [Microsoft Help and Support article #306005](#) for more information.

4. Download and install AIS Server.
5. Download and install Web VTS.
6. Configure Web VTS.

Installing Web VTS

You must have administrative rights on the computer to install Web VTS.

AIS Server must be already installed on the computer.

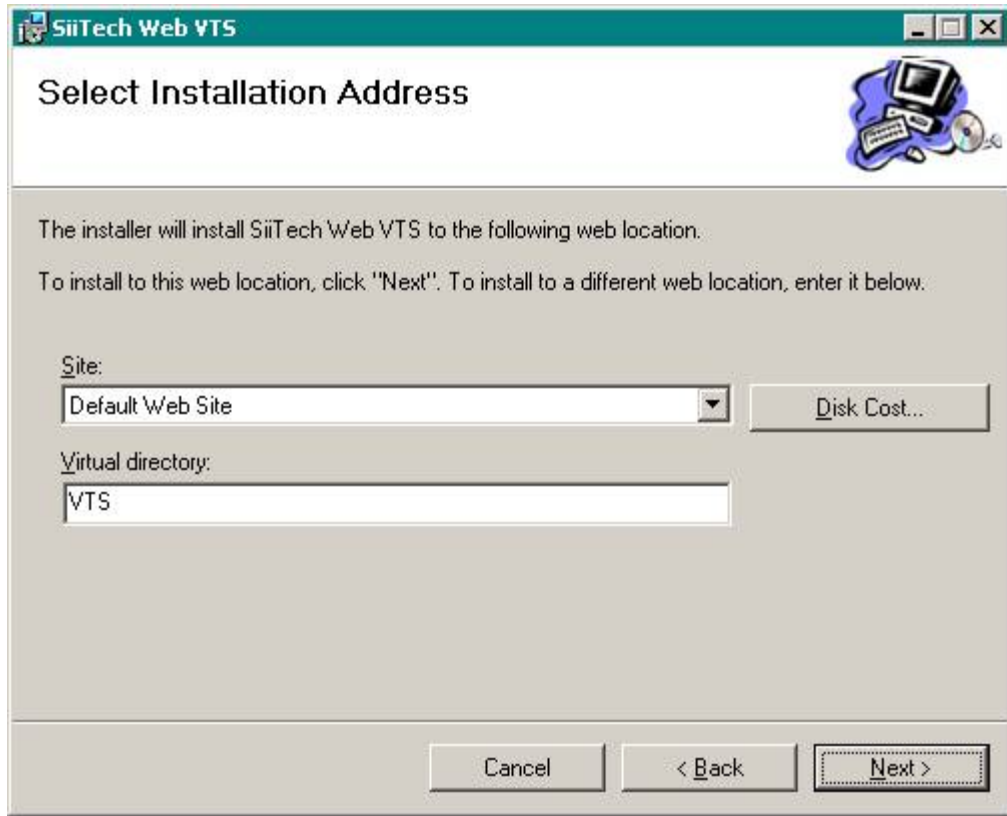
1. Double click on the Web VTS installation file. In the **Welcome** dialog box, click **Next**.



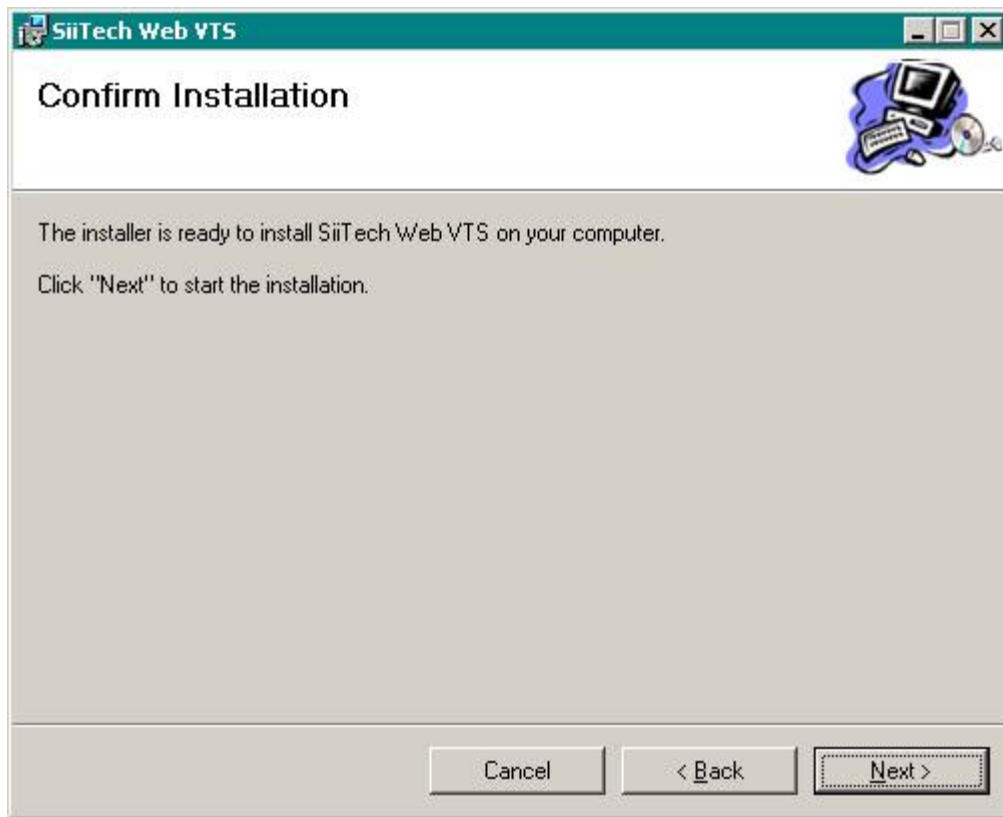
2. You will be presented with the License Agreement. If you agree to the terms of this license agreement, select the **I Agree** radio button and click **Next**. If you do not agree to the terms of this license agreement click **Cancel** so that the installer does not continue. You will be unable to install this software application.



3. The installer will install the Web VTS files into a default virtual directory. If you wish to install Web VTS to the default virtual directory, click **Next**. If you wish to have Web VTS installed to a different virtual directory, enter a name for the virtual directory. When you have selected the virtual directory, click **Next** at the **Select Installation Address** dialog box.



4. Click **Next** at the **Confirm Installation** dialog box to begin copying the necessary Web VTS files to your computer. The installer will report its process as it installs the files.



5. You will be presented with the **Web VTS Database** dialog box. At this step you have to create Web VTS database.

To create Web VTS database:

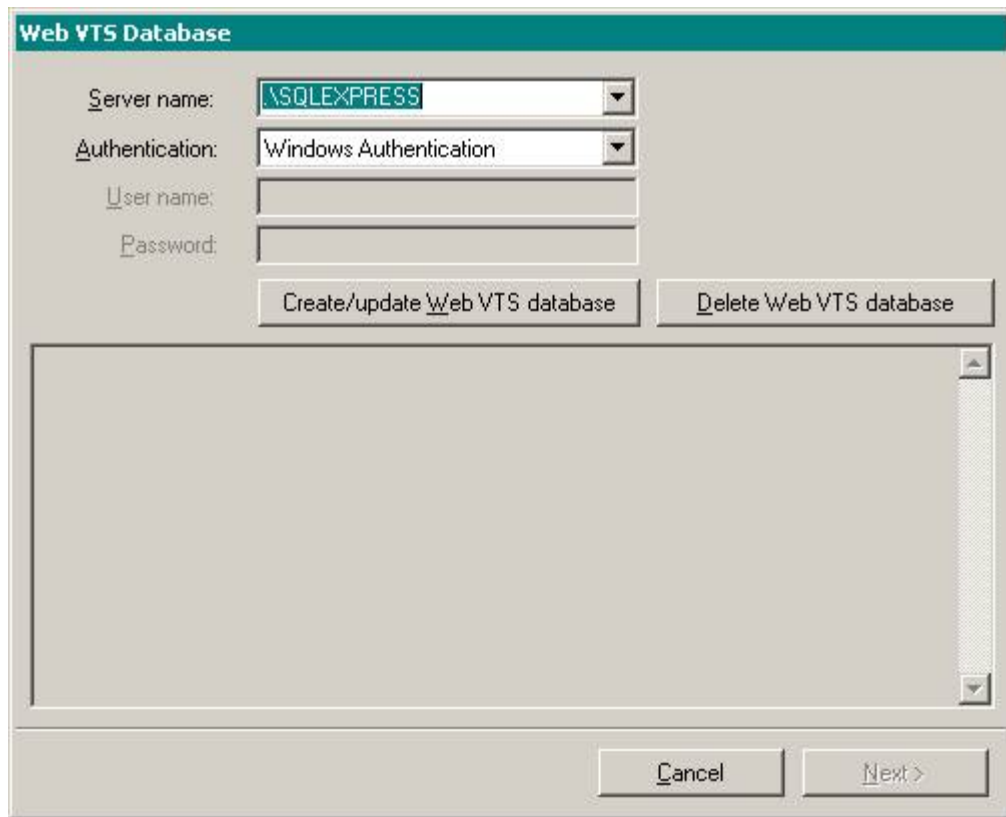
- a. In the **Server name** list box, select or type the name or address of the SQL Server instance on which you want to create the database.
- b. In the **Authentication** list box select SQL Server authentication.
- c. If you selected **SQL Server Authentication**, in the **User name** box, type the name of the SQL Server account that you want to use to create the new database.

Note: This account information is used only by Web VTS Database Setup. The information is not saved and will not be used after Setup completes.

- d. If you selected **SQL Server Authentication**, in the **Password** box, type the password for the account.
- e. Click **Create/update Web VTS database**.

After the database setup is completed, click **Next**.

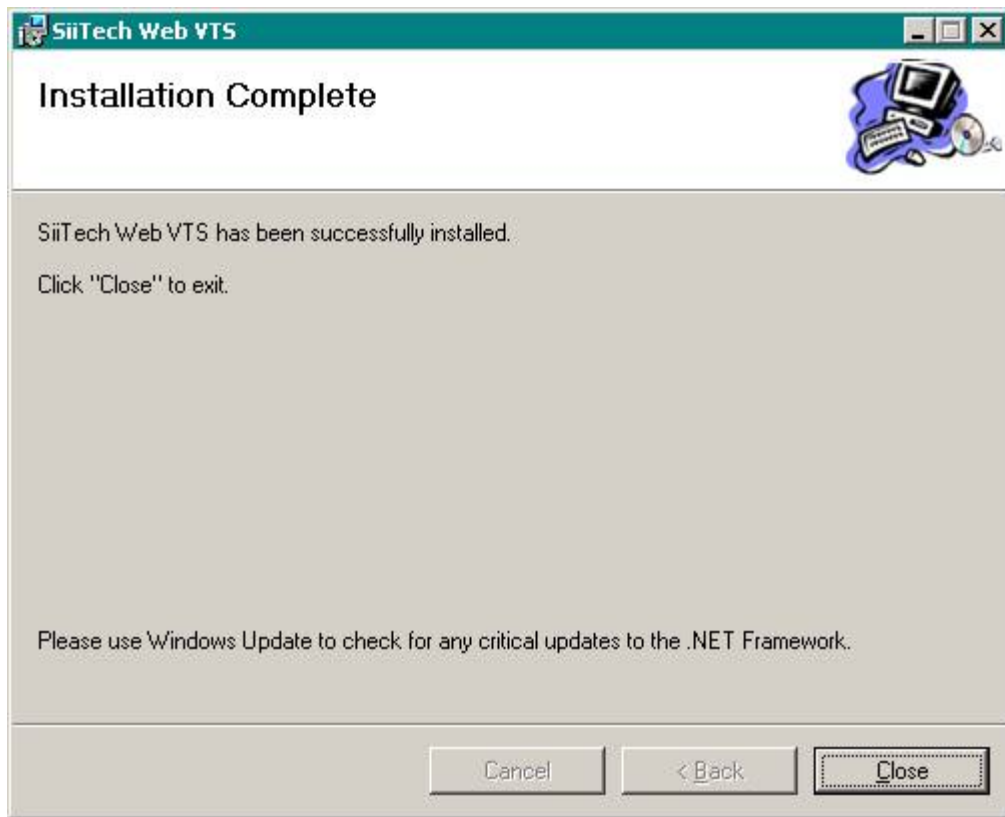
Web VTS Installation Guide



The image shows a dialog box titled "Web VTS Database" with a teal header. It contains the following fields and controls:

- Server name:** A dropdown menu with the text "\SQLEXPRESS" selected.
- Authentication:** A dropdown menu with the text "Windows Authentication" selected.
- User name:** An empty text input field.
- Password:** An empty text input field.
- Buttons:** Two buttons are located below the input fields: "Create/update Web VTS database" and "Delete Web VTS database".
- Bottom Panel:** A large empty rectangular area with a vertical scrollbar on the right side.
- Footer Buttons:** Two buttons are located at the bottom right: "Cancel" and "Next >".

6. You will be notified when installation has completed. Click **Close** at the **Installation Complete** dialog box.



7. To launch Web VTS:

- Open your web browser and enter **http://localhost/web_vts_virtual_directory_name** in URL address box;
- Log in to the application using "admin/1234" as user name and password.

Note: *web_vts_virtual_directory_name* is a name of virtual directory where your Web VTS is installed (see step 3 of the installation sequence).